

# EMPOWER<sup>HER</sup> NETWORK

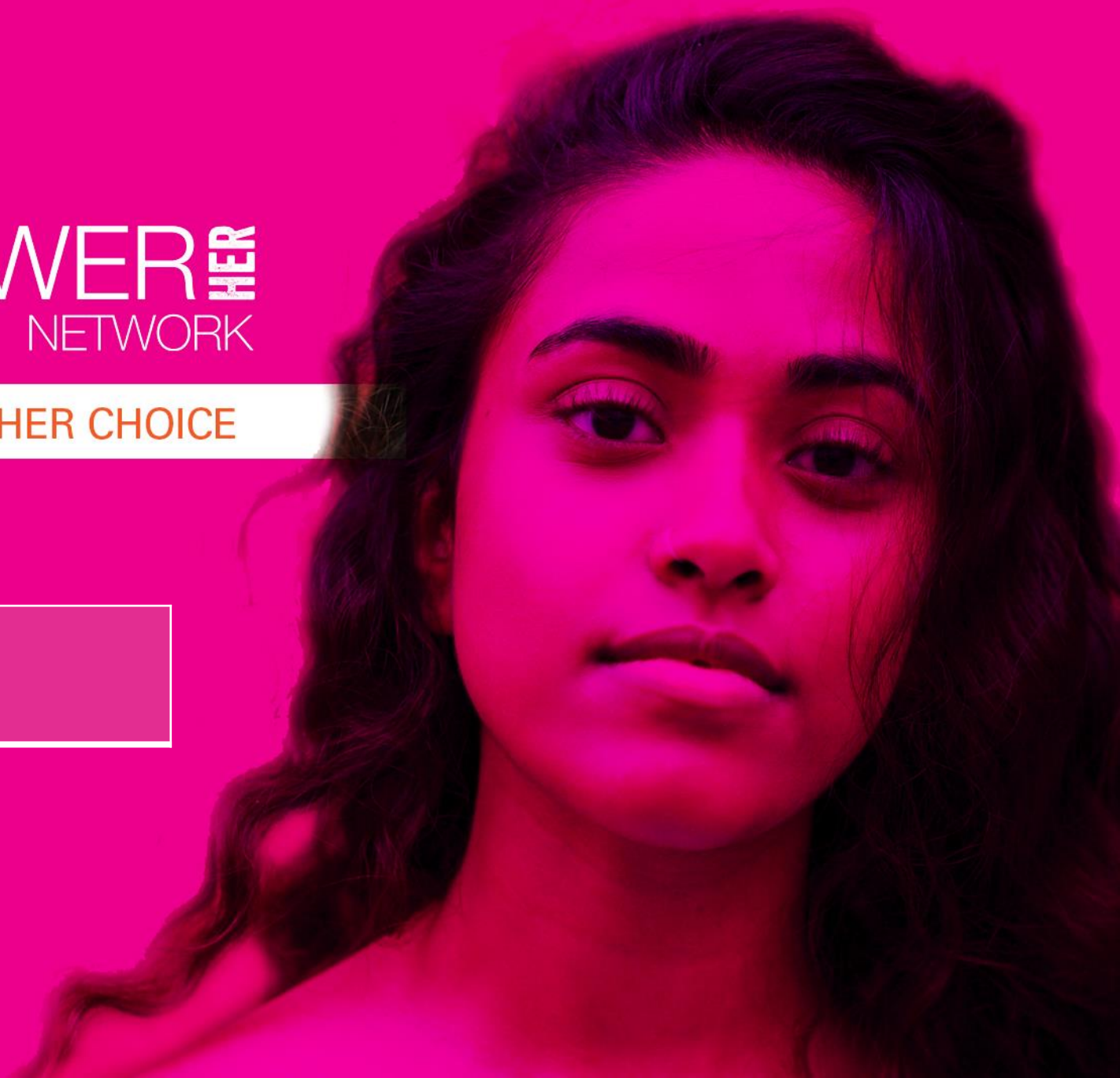
DESTINATION: HER CHOICE

Presentation For:

**King County  
presentation**

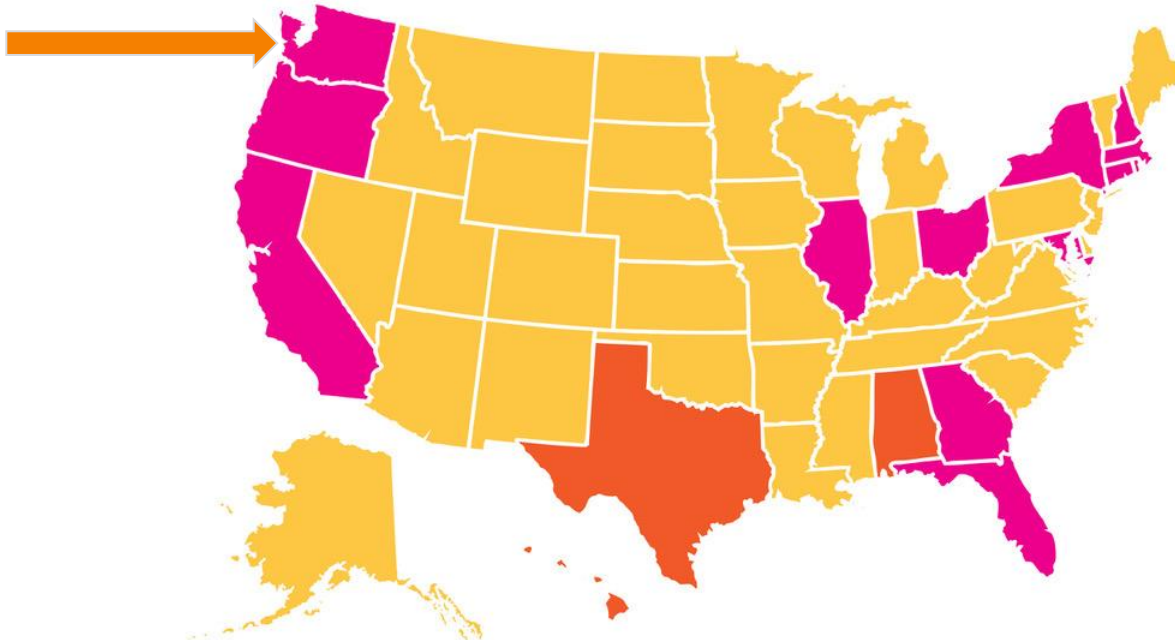
[EmpowerHerNetwork.org](http://EmpowerHerNetwork.org)

[@empowerherus](https://www.instagram.com/empowerherus)



## CURRENT LOCATIONS

EMPOWER<sup>HER</sup>  
NETWORK



### We currently have locations in the following cities:

Florida

Northeast Ohio

Virtual Rural

Georgia

New England

Illinois

New York, NY

Mid-Atlantic

Southern California

Pacific Northwest

### Coming in 2023!

Alabama

Texas

Hawaii

EMPOWER<sup>HER</sup>  
NETWORK

DESTINATION: HER CHOICE

# THE CHALLENGE

Empower Her Network exists to address an issue identified by immediate aftercare providers: Some survivors exhaust immediate aftercare services after 3-24 months without a realistic long-term economic alternative. These women present risk for re-trafficking, homelessness, and exploitation. They need assistance tackling societal barriers surrounding housing, education, and employment to break exploitation and poverty cycles and remain forever free.

EMPOWER<sup>HER</sup>  
NETWORK

DESTINATION: HER CHOICE

# OUR MISSION

Destination: Her choice.

For the ones who are ready, EHN clears a path to the future they design.

Empower Her Network collaborates with ready survivors of human trafficking who find themselves in the same vulnerable circumstance that led to their initial exploitation by removing housing barriers, financing education, and uncovering employment opportunities.

EMPOWER  HER  
NETWORK

DESTINATION: HER CHOICE



Our process is rooted in its strong partnerships with aftercare programs nationwide that nominate women to EHN. These after programs provide emergency and immediate needs to survivors to ensure a level of stability. When they are ready, they nominate them to EHN.

## OUR PROCESS



While every plan is unique,  
the goal is always the same:

**FISCAL  
INDEPENDENCE.**

She came to the U.S. for a better life. Instead she was trafficked.

# MEET MARY



DOB	3/9/1992
Immigration Status	-
Legal Status of Client	T-Visa
Annual Household Income	\$15,000
Monthly Income Current	-
Monthly Income Goal	\$2,000
Monthly Expenses Estimate	\$1,100
Employment Status	Employed Full-time
Employment Status Text	-
Where Employed	Cricket Wireless

## BARRIERS FACED:

1. Pregnant without childcare options for her to return to work
2. Wage only covered utilities and rent; she was sleeping on an air mattress with no other furniture
3. Transportation
4. A path to increase her salary
5. Lack of mentorship as a single mother in the working world for the first time

# Empowerment Plan

---

## Goals

---



- Get household essentials before baby arrives in October.
- Enroll in childcare certification class by March.
- Solution for current transportation issue.
- Weekly visits with advocate to maintain accountability and focus on inner strength and growth.

**FORECASTED COST: \$6,000**





## OUR APPROACH

This is not a handout. EHN's innovative approach leans into existing services to eliminate overlapping resources while putting each survivor in the driver's seat, often for the first time. It is true empowerment, with each survivor at the center of service, determining her own success.

# Sophisticated Measurement Tools

## Quantitative Results



- ✓ 100% of EHN alumni secured stable housing
- ✓ Average plan runs 16 ½ months
- ✓ Average wage increase over that time is \$8,792 (from \$18,015 to \$26,807)



“Empowerment means to better my mentality in order to become a more confident, stronger and new version of myself. I have now shed the dead behavior, and the lessons and layers of myself that no longer serve any purpose for the new and improve Mary.”

## Qualitative Results



- ✓ It is difficult to capture the more subjective components of EHN’s program — curating confidence; igniting hope; establishing focus.
- ✓ EHN asks six questions at the beginning, middle, and end of the program and weights answers in a scalable manner.
- ✓ Here are current averages (out 100 possible):

Time	Average
Beginning	42
Midpoint	54
Endpoint	75

# EMPOWER HER NETWORK TO DATE:



70 National Partners



105 Survivors on an active empowerment plans



141 Alumni who achieved fiscal independence



31 Nominations on a waiting list

EMPOWER<sup>HER</sup>  
NETWORK

DESTINATION: HER CHOICE

# EMPOWERER

NETWORK

